



ASPIRE
PUBLIC
SCHOOLS

Gratitude Report

INSIDE:

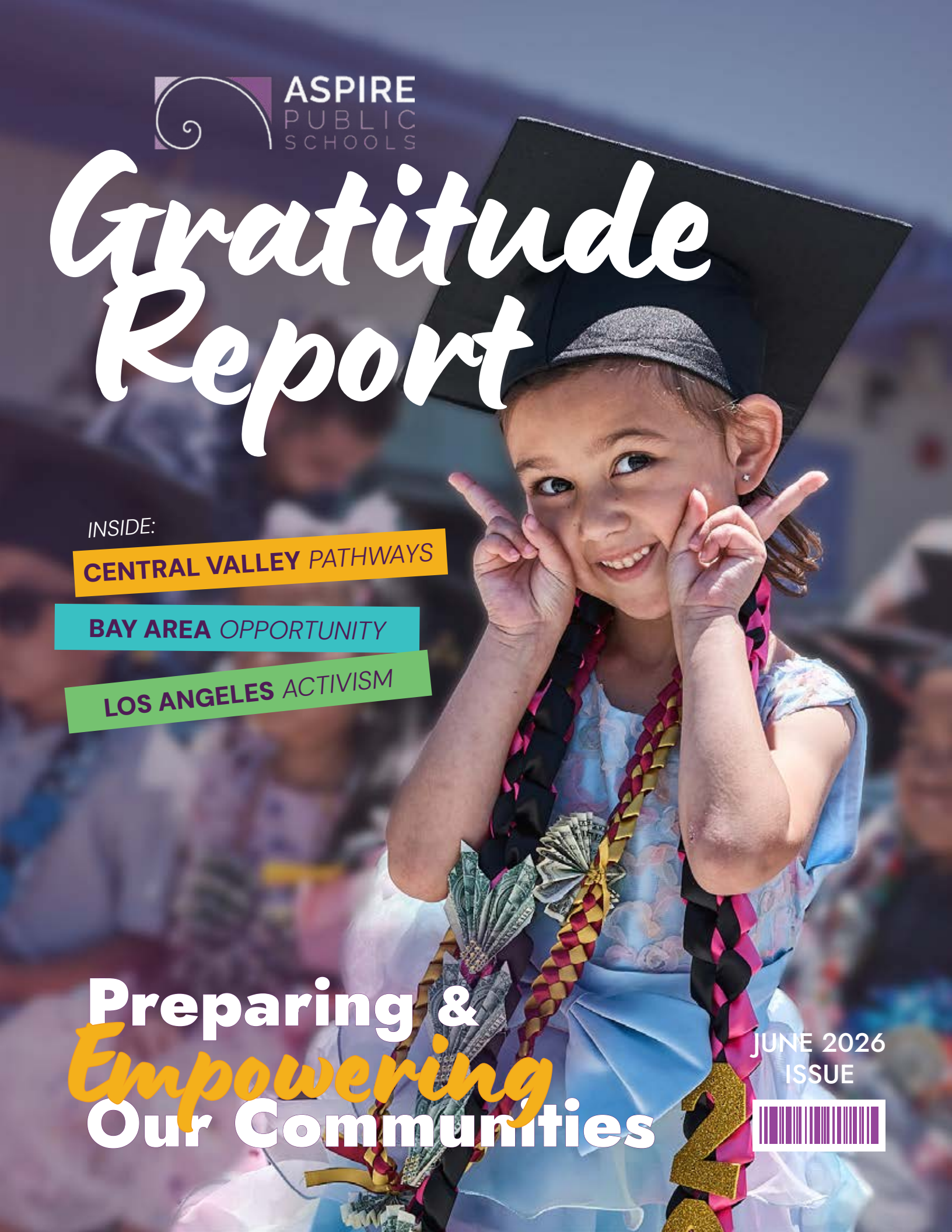
CENTRAL VALLEY PATHWAYS

BAY AREA OPPORTUNITY

LOS ANGELES ACTIVISM

Preparing &
Empowering
Our Communities

JUNE 2026
ISSUE



A Message from Our Executive Directors



Dear Aspire Partner,

As we reflect on this past year at Aspire Public Schools, we are reminded that our mission has always transcended academic outcomes. It is about the power of preparing and empowering communities. Across Central Valley, Bay Area, and Los Angeles, our schools serve more than 15,400 scholars whose dreams are inextricably linked to their families, neighborhoods, and local histories.

Last year, we began putting structures in place to bring leadership closer to the regions we serve — a shift designed to bring our organization’s heart closer to our communities. As your leaders, we are proud to share that this transition toward regionalization is rooted in proximity, partnership, and trust. We recognize that the families and scholars we serve navigate complex realities that require schools to be steady anchors of safety, belonging, and clarity. By placing leadership and decision-making closer to our campuses, we are aligning our structure with our deepest values. Experience has taught us that equity cannot be addressed from a distance, and communities cannot be served through a “one size fits all” approach. Regionalization allows us to build stronger local governance and respond to the unique needs of our scholars with greater urgency and care.

Across this report, you will see how this commitment comes to life in powerful and deeply human ways. In the Central Valley, we share how career-connected pathways allow

scholars to gain real-world experience, earn certifications, and begin to see their futures with clarity and confidence.

In the Bay Area, we highlight how investing in educators from within is building a sustainable pipeline of teachers and leaders to shape the future of our schools. And in Los Angeles, we tell the story of a school community where scholars, families, and staff come together to meet immediate needs through a food pantry, while expanded supports for newcomer students ensures that every young person is seen and supported.

None of this work happens in a vacuum. Your partnership is what allows Aspire to live our mission while evolving to meet a changing world. We are energized by the path ahead and profoundly grateful for your belief in our scholars.

Thank you for investing in Aspire and for standing with us as we prepare and empower communities across California.

With Gratitude,

Chris Carr

*Executive Director,
Aspire Los Angeles*

Bess Kennedy

*Executive Director,
Aspire Home Office
& Aspire Foundation*

**Javier Cabra
Walters**

*Executive Director,
Aspire Bay Area*

Tony Solina

*Executive Director,
Aspire Central Valley*

Contents

4 About Aspire

6 Our Teammates & Scholars

8 **Central Valley**

Regional Highlights

Where Pathways Create Possibility

Career pathways and real-world experiences in the Central Valley are helping students find their purpose

12 **Bay Area**

Regional Highlights

When Opportunity Begins Within

Aspire Bay Area is building a new generation of educators by investing in its own community

16 **Los Angeles**

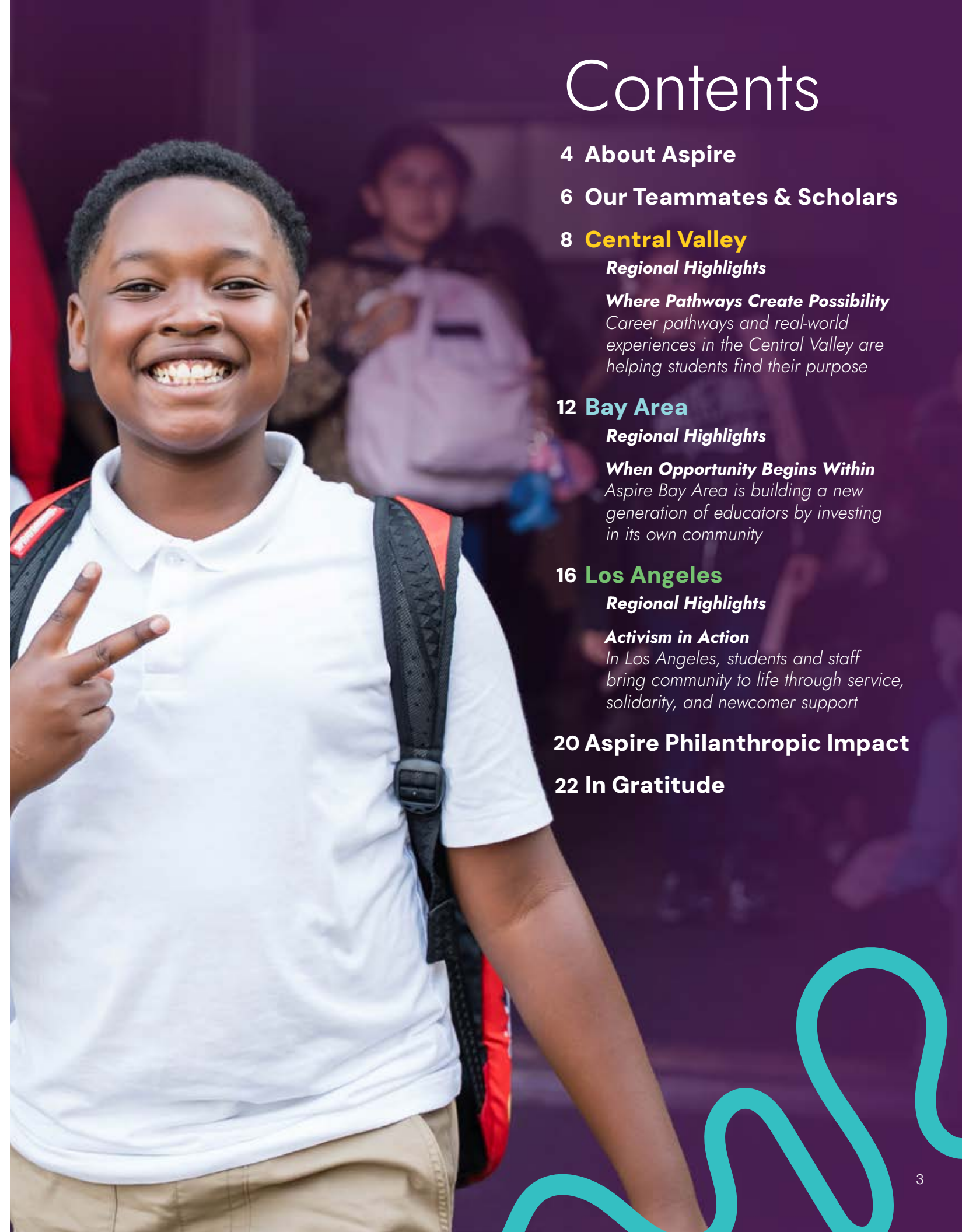
Regional Highlights

Activism in Action

In Los Angeles, students and staff bring community to life through service, solidarity, and newcomer support

20 **Aspire Philanthropic Impact**

22 **In Gratitude**



About Aspire

Our Vision

Aspire scholars are prepared and empowered to build a fulfilling and liberated future for themselves and their communities.



Our Mission

Provide a rigorous, joyful academic experience that cultivates our scholars' skills, talents, and gifts, such that they may pursue and persist in college or any post-secondary pathway that is authentic to their identities.

Promote inclusivity and disrupt systems that have historically oppressed marginalized communities, including Black, Latino/a/x, Indigenous, and People of Color.

Nurture our scholars' pride in their abilities, identities, and communities.



Core Values

Our communities (predominantly Black and Latinx) persist in a system that fails to adequately educate all students. Aspire was founded to address these long-standing inequities and transform the disproportionate outcomes they cause. We believe these core values can guide us toward greater racial, social, and gender equity across our communities.



Bienestar
(Well-being)



Culture of
Belonging



Community
Partnership



Agency + Self-
determination



Joy

We must continually put our **Equity Commitments** into action and live by them. Every Aspire teammate is accountable for applying these commitments in every decision, use of resources, and management of talent. The power of our collective and individual dedication to these commitments is reason enough to be hopeful as we pursue our mission and create a more just and equitable world.

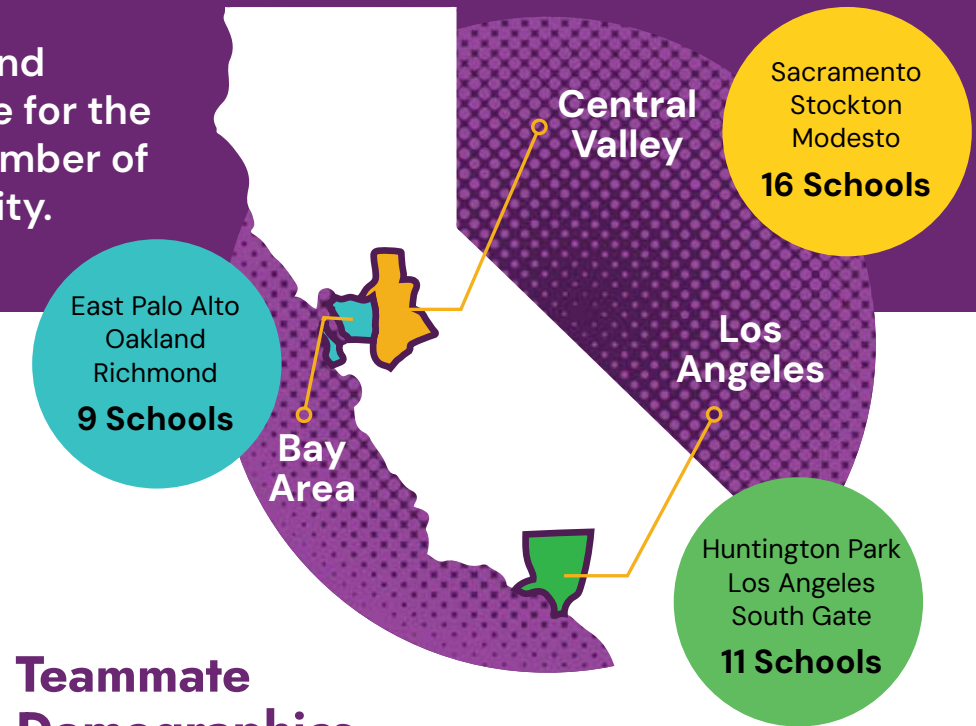
At Aspire We...

- **Understand** the significant difference between equity and equality. Every scholar deserves to receive what they need to succeed (equity), not that every scholar receives the same amount of resources, instruction, attention, etc. (equality).
- **Develop** school environments where all scholars are actively and meaningfully engaged in rigorous instruction.
- **Interrupt** the “school to prison pipeline”—policies and practices that are directly and indirectly pushing the most at risk scholars out of school and on a pathway to the juvenile and criminal justice systems.
- **Engage** families as partners in meaningful ways in our work.
- **Build** the capacity of diverse teams that are more reflective of our scholars.
- **Nurture** an open, collaborative, and trusting environment because the work is enormous, deeply personal, emotional, and often difficult.



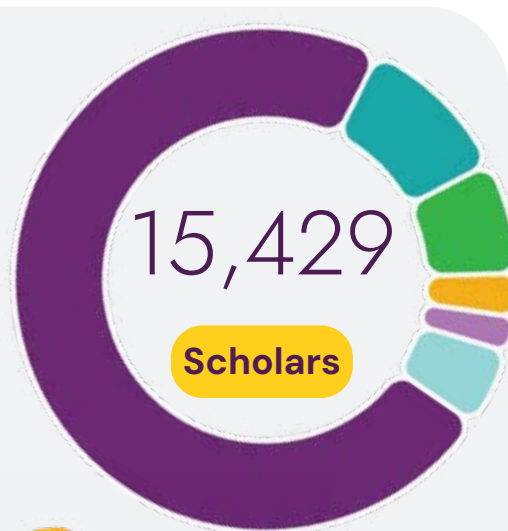
Our Teammates & Scholars

We are all connected and collectively responsible for the well-being of every member of our extended community.

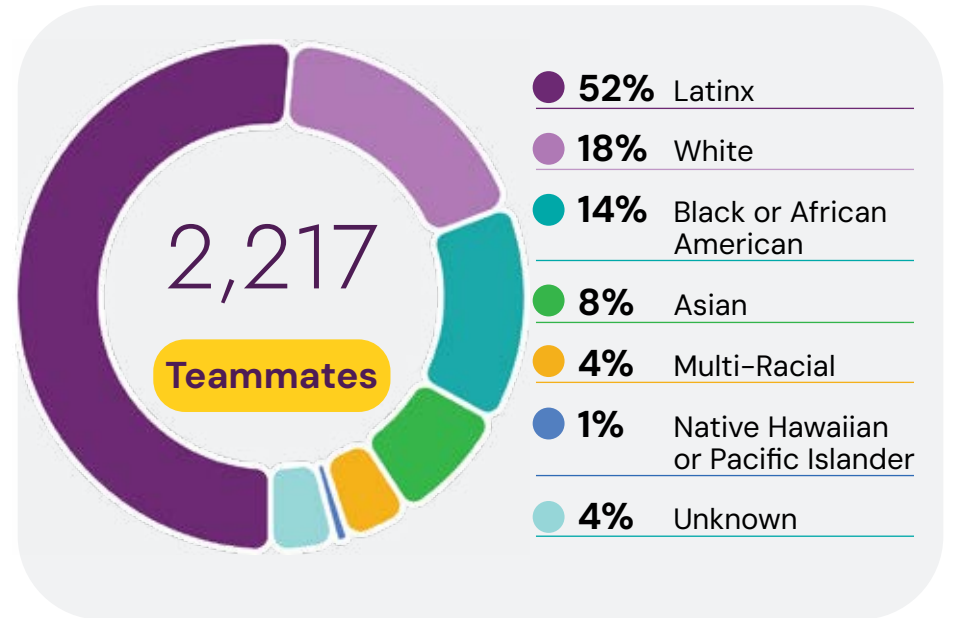


Scholar Demographics

- 73% Latinx
- 10% Black or African American
- 7% Asian
- 3% Multi-Racial
- 2% White
- 5% Unknown



Teammate Demographics



My child's teacher goes above and beyond to help them succeed in school and in life. She helped my child love school again.

— ASPIRE MONARCH ACADEMY PARENT, ASPIRE BAY AREA



74% 11% 52%

of scholars qualify for free or reduced cost lunch

receive Special Education services

speak a language other than English at home

91% 89% 91%

of teammates feel a sense of belonging

of teammates believe Aspire is supportive of their professional growth

of families believe the school provides a safe environment for their student

Central Valley Regional Highlights

In Aspire's Central Valley, preparing and empowering communities begins with a clear vision for what is possible when schools, families, and educators move forward together.

Across 16 schools serving more than 7,500 scholars, our work is guided by Vision 2030, a strategic commitment to ensuring every scholar graduates prepared for community, college, and career while cultivating the confidence and agency to shape their own future. This year marked a significant milestone as **seven Aspire Central Valley schools successfully earned charter renewals**, reaffirming the strength of our academic program, the dedication of our educators, and the trust our communities place in our schools.

Across the region, our vision comes to life through intentional investments in post-secondary pathways that connect classroom learning to the real world. Aspire Central Valley scholars are engaging in dual enrollment, internships, and career-connected coursework designed to expand opportunity and ignite purpose. In 2025 alone, scholars completed more than **2,300 college courses** while still in high school, earning nearly **7,000 college units**, and **90.6% percent of students** met the state's benchmark for college and career readiness. These milestones reflect more than academic progress. They show what is possible when schools, families, and community partners work together to prepare scholars for lives of leadership, service, and opportunity.

Central Valley Graduation Rate

95.7%

exceeding all surrounding districts

"I value the resources and systems Aspire has in place to support instructional consistency, operational alignment, and compliance across sites."

— CENTRAL VALLEY TEAMMATE

Key Achievements

3 out of 4 schools improved SBAC* results in English language arts

5th and 7th grade scholars achieved double-digit growth in math

Latinx and Black scholars increased their math results by 4%

*SBAC stands for Smarter Balanced Assessment Consortium and is the primary standardized test used in California. It is administered to students in grades 3-8 and 11 to measure student progress in math and English language arts (ELA)

Proficiency Rates

Aspire Central Valley

Ceres Unified

Lodi Unified

Modesto City Elementary

Sacramento City Unified

San Juan Unified

Stockton Unified

English Language Arts

30%

37%

33%

30%

29%

29%

27%

Math

21%

21%

24%

21%

21%

19%

17%

Percent Met/Exceeded Grade Level Standards

332

graduates in 2025

90%

of secondary scholars feel supported by their teachers

91%

of families feel their school is preparing their child for the next academic year

16

Central Valley scholars

graduated high school with a college degree or certification in 2025



Where Pathways Create Possibility

The most meaningful transformation often begins with a question: What is possible?

For Aspire Central Valley scholars, that question is being answered through immersive, career-connected pathways that bring the future into focus. Industry partnerships, dual enrollment, and hands-on learning allows scholars to step beyond traditional classrooms and into spaces where they are testing and refining their aspirations.

At least two pathways are offered at every Aspire Central Valley high school campus, spanning nine industry sectors including Healthcare, Engineering, Agriculture, Business, Computer Science, Education, Administrative Justice, Pre Law, and Mental Health. Each pathway blends A-G aligned coursework with work-based learning and real-world industry experience tied directly to career interests.

For Aerianne Mortega, Business Pathway scholar at Aspire Ben Holt Academy, the journey began with uncertainty. "Prior to starting this pathway, I was completely unsure of what direction I wanted to take my future in," she shared. "I felt lost." Through aligned courses and exposure to professionals, that uncertainty transformed into clarity. "After completing the pathway, I have been exposed to a large variety of skill sets and have strengthened my academic focus as well as personal motivation. I feel now that I have a greater sense of direction."

For Tareem Alhadhrami, a Healthcare Pathway scholar at Aspire Stockton Secondary Academy, moments of transformation came through direct exposure. "I really enjoyed it when the EMT from Delta [College] came and spoke with us. He gave a very moving speech and I felt so connected to it," he reflected.



Collaborating with **9 higher education and industry expert organizations**



223 scholars have participated in industry tours that aligned with their pathways

26 scholars have participated in internships

Across the region, partnerships with local colleges and industry leaders have expanded opportunity. Scholars are earning CPR, First Aid, HIPAA, and NARCAN certifications. They are stepping into internships and clinical experiences. They are building résumés before they receive diplomas.

Connecting students' learning to real-world careers means giving them direct exposure to how classroom learning applies beyond school.

— JANINE GALVAN, SOCIAL WORKER, ASPIRE CENTRAL VALLEY

Perhaps most powerful is the growth that cannot be measured by credits alone. For Aisha Chaudhry of Aspire Ben Holt Academy, the Mental Health pathway reshaped the way she understands the world around her. Through her experience, she began to consider the complexity behind people's reactions and emotions. "Being in the mental health pathway made me more understanding of other people's feelings and made me understand why some people may react the way they react."

Looking ahead, the region's vision extends far beyond expanding programs. Aspire Central Valley is designing a high school experience where career pathways shape the rhythm of each scholar's day and connect learning to life beyond campus. Career pathways will be embedded intentionally, blending academic coursework with internships, industry projects, clinical placements, and college partnerships. Work-based learning will become a graduation milestone, signaling that scholars have applied their learning in meaningful professional settings.

With expanded partnership and investment, scholars will accumulate college credits, industry certifications, and résumés that reflect authentic experience. More importantly, they will graduate with clarity about who they are becoming and how they intend to contribute. Career pathways are becoming a defining feature of the Aspire Central Valley experience, ensuring that preparation and empowerment are daily realities woven into every student's journey.

Bay Area Regional Highlights

At Aspire Bay Area, preparing and empowering communities means recognizing that schools play a vital role far beyond the classroom.

Across nine schools, we serve 3,585 scholars, **99 percent of whom identify as Black, Indigenous, or People of Color**, with **84% qualifying for free or reduced lunch**, **17% receiving special education services**, and **65% speaking a language other than English at home**. In our communities, schools are places where families turn for support, connection, and opportunity.

This year, that spirit of care and community was visible in many ways, from our regional holiday gift drive providing curated gifts to **46 foster youth and students experiencing housing insecurity**, to scholars honoring Ruby Bridges' legacy through the Ruby Bridges Walk to School Day, to afterschool scholars assembling food and household supply boxes for families impacted by the government shutdown.

The Aspire East Palo Alto Charter School Garden, a cherished community space for nearly 20 years, continues to bring neighbors together through hands-on learning and shared stewardship. These moments reflect the heart of our work: when schools nurture community, scholars gain the confidence, experiences, and support they need to shape a future larger than the world they have known.

Key Achievements

5th and 7th grade scholars achieved **double-digit growth in math**

Black Student Unions expanded regionwide and **Black Family Advisory groups** were implemented to elevate **family voice and partnership**

11th grade scholars with disabilities **increased their math scores by 18%**

"I've seen improved attendance and engagement from students whose families participate in our monthly meetings."

— ANGELENA BANKS, PRO-BLACK PROGRAMMING COORDINATOR, ASPIRE BAY AREA



Bay Area Graduation Rate

93.6%

exceeding all surrounding districts

Proficiency Rates

Aspire Bay Area

Oakland Unified

West Contra Costa Unified

Ravenswood City Elementary

English Language Arts

25%

24%

23%

11%

Math

15%

17%

17%

6%

Percent Met/Exceeded Grade Level Standards

81%

of 3rd to 5th grade scholars feel a sense of belonging

88.3%

graduating class of 2025 A-G completion rate

79.2%

of scholars identified as prepared for college and career

178
graduates
in 2025



When Opportunity Begins Within

Across California, classrooms have been feeling the strain of a growing teacher shortage for years, particularly in high-need communities and in service of special education scholars.

Aspire Bay Area saw this as a responsibility to act. Rather than look outward for short-term fixes, the region has chosen to invest in the people already serving students every day, building a sustainable educator pipeline from within its own community.

That commitment has taken shape through a comprehensive Career Pathways strategy grounded in access, belonging, and excellence. From classified teammates earning bachelor's degrees through Rivet School to aspiring teachers completing residencies with Alder Graduate School of Education, and interns pursuing credentials through Reach University and Alliant International University, Aspire has created clear, supported routes into teaching and leadership. Financial support, coaching, and real classroom experience ensure that preparation is rigorous and deeply connected to scholars.

For Natalie McBride, Aspire Bay Area Director of Talent, the impact is visible. "Where there was a nationwide deficit for Education Specialists, this was a solution that actually works," she shares.



2025–2026 Aspire Bay Area cohort consists of **22 teacher residents** across six school sites

86% of teammates say Aspire is **supportive of their professional growth**

Since Aspire Bay Area partnered with Alder GSE in 2019, **85% of graduates have been hired**

Since 2020, Aspire Bay Area has hired more than 20 Education Specialist Interns through its Alliant partnership. Reflecting on this continued investment, McBride adds, "By offering our Career Pathways and Credential Programs, we are investing in our teammates. We see better outcomes and people that are dedicated to our communities, kids, each other, and our mission and vision."

That investment changes individual lives as well. Logan Campbell, now a Lead Education Specialist, reflects, "I never would have been able to seriously consider the Alliant program if it was not supported by Aspire. In short, the pipeline works when given ample support."

Bianca Garcia, now a Bay Area Academic Program Manager, credits Aspire's mentorship and professional development opportunities with shaping her path. "Being a mentor provided me with venues such as participating in Relay Graduate School of Education for coaching," she shares. "The skills I learned attending coaching professional development shaped me into the coach I am now." Those experiences created a clear pathway forward. "I was able to land a role as an instructional coach and now a program manager." Her journey reflects the power of Aspire Bay Area's commitment to developing talent from within, equipping educators with the skills, confidence, and opportunities to lead.

I fell in love with the community at the school I worked at.

— BIANCA GARCIA, ACADEMIC PROGRAM MANAGER, ASPIRE BAY AREA

Aspire Bay Area is committed to expanding access to credentials and degrees, increasing financial support, deepening mentorship systems, scaling leadership development, and strengthening regional partnerships. The future of our schools depends on sustained investment in educators and leaders who believe in our students and our communities. Through these pathways, Aspire is not only addressing today's workforce challenges. It is preparing and empowering communities to lead for generations to come.

Los Angeles Regional Highlights

Aspire Public Schools Los Angeles serves three communities—South Gate, Huntington Park, and South LA—and supports more than 4,188 scholars each year. Our work is grounded in our 4As: Antiracism, Academics, Agency, and Activism.

This school year, we have placed a regional emphasis on activism, creating meaningful opportunities for staff, scholars, and families to engage in and lead efforts that drive positive change. The result of this were projects that amplified the voices of our students and families, and new initiatives that have brought hope, such as Aspire Ollin's Garden of Hope

and El Corazon de Jaguar Pantry. Aspire LA is a community where every child is supported to thrive, with a whole-child approach that prioritizes both academic success and social-emotional well-being.



"I cannot emphasize enough how welcoming and engaging Titan Academy has been for my daughter, my husband, and me. I have learned a lot as a parent, and I see how my daughter has evolved since her first year."

— CRISTINA MARTINEZ, PARENT, ASPIRE TITAN ACADEMY

Los Angeles Graduation Rate

97.4%

exceeding all surrounding districts

Key Achievements

Aspire Los Angeles **decreased chronic absenteeism** by over **17 percentage points** since the COVID-19 Pandemic

11th graders saw **double-digit growth** in both English language arts and math

Black and Latinx scholars **increased their English language arts results** by 12% and 24% respectively

Proficiency Rates

Aspire LA

Los Angeles Unified

Los Angeles County Office of Education

English Language Arts

40%

41%

38%

Math

26%

31%

17%

Percent Met/Exceeded Grade Level Standards

84%

of scholars identified as prepared for college and career

145

graduates in 2025

92.7%

graduating class of 2025 A-G completion rate

Activism in *Action*

In a neighborhood where food insecurity is a daily reality, Aspire Ollin University Prep has expanded the role of school beyond classroom walls.

Drawing on a vision of wraparound services and deep community partnership, the Ollin team created **El Corazón del Jaguar, a food pantry and garden that serves hundreds.** It is a space built by scholars, sustained through partnership, and grounded in the belief that to feed one another is an act of solidarity.

A small garden on campus built and cultivated by scholars and staff quickly grew into something larger. Today, the pantry serves families from every Aspire LA school and beyond. Since opening in October 2024, over 3,000 pounds of food have been distributed, reaching up to 154 families per day. The work is carried forward by scholars who have made the pantry their own, painting murals on the pantry walls and raising nearly \$1,000 to sustain the effort. A partnership with Seeds of Hope provides a steady and reliable supply of food, ensuring the pantry can continue to meet the needs of the community.

For parent Ana Maravilla, it arrived at exactly the right moment. "Times are hard," she shared. "My husband is staying home due to reduced hours from work. The pantry has helped us because with the food that is being given away, we had the opportunity to enjoy fresh produce, canned goods, and even pastries and bread."

Bianca Iniguez, 12th grade scholar at Ollin, saw something else happen alongside the food distribution: "The community has definitely shown up more and scholars are more involved to be part of this movement regardless of their grade level."



What makes my school special is how the entire school treats all the kids. Every kid has a different personality, and they make them feel special.

— DAVIAN ORTEGA, 5TH GRADE STUDENT, ASPIRE JUNIOR COLLEGIATE ACADEMY

We have **decreased chronic absenteeism** for multi-language learners from **20.2%** in 2025 to **17.7%** in 2026

This school year, the food pantry has **delivered more than 650 meals** across all Aspire LA schools

Multi-language learners in LA have **improved in their Distance from Standard** in ELA each year for the past 3 years, with **4 points of growth** in 2024-2025

That spirit of community extends to every scholar walking through Aspire LA's doors, including the 140 newcomers (students who have recently arrived to the United States) enrolled this year.

Guided by Aspire's core commitments to antiracism and activism, Aspire LA built an entirely new infrastructure of support, adding a Director of Multi-Language Learners and Newcomer Supports along with five Newcomer and Attendance Support Specialists. Funded in part by a \$1.8 million grant from the Ballmer Group, programming provides one-on-one relationship building, family onboarding, buddy systems, Rosetta Stone licenses, and classroom support across 11 schools.



The results are measurable and meaningful. Multi-language learners increased English language proficiency 7 percentage points by mid-year, while chronic absenteeism has dropped by 2.5%. The impact of this support is visible in everyday moments as well. One newcomer scholar, Aspire Centennial College Prep's Alisson Ramirez, began the year struggling to stay connected to school, accumulating 16 absences during fall semester. After being paired with a Newcomer and Attendance Support Specialist and participating in regular check-ins, things shifted. With someone consistently showing up for her, helping her navigate school systems, and building trust, her attendance dramatically improved. In the second semester, she missed only one day of school. When students feel seen and supported, they show up ready to learn.

At Aspire Los Angeles, activism is shelves stocked by scholars and teammates, murals painted by our own community, and a new specialist showing up every morning to make sure a newcomer student does not feel alone. It is the belief, lived out in practice, that a school's deepest work is not charity. It is solidarity.

El corazón sabe. The heart knows.

Aspire Philanthropic Impact

In 2025-2026, the Aspire Public Schools Foundation secured over **\$45 million** in competitive grants and philanthropy to support scholars and schools.



We are so grateful for the ongoing support of the **Golden State Community Foundation**, whose funding is facilitating leadership development and professional growth opportunities for our Aspire Bay Area teammates

The LA84 Foundation is supporting Aspire for the first time this year by funding the expansion of the Aspire Youth Sports program across all 4th-6th graders in Aspire Los Angeles

We are in our third year of the Bipartisan Stronger Connections Grant funding from the **California Department of Education**, which has made a significant impact in our ability to combat chronic absenteeism across Aspire schools in the Central Valley

The generosity of our individual donors continues to provide exceptional opportunities for Aspire scholars.

With this support, we are able to directly fund:



Field trips which provide scholars with joyful, experiential learning outside of the classroom that help bring possibilities to life

Scholarships which afford outstanding scholars the agency + self-determination to pursue a post-secondary path most authentic to their identity



Classroom needs, providing supplies and equipment that enhance bienestar (well-being) for our scholars every day

...and much more!

In Gratitude

Our generous donors help us go the extra mile to ensure we are empowering minds and transforming futures for every Aspire scholar.

Aspire Public Schools Board of Directors

Beth Hunkapiller, Board Chair
Lorea Martínez
Ay'Anna Moody
Veleta Savannah

Aspire Foundation Board of Directors

Greg Bybee
Beth Grossman
Beth Hunkapiller
Megan Martin Strickland
Stephanie Warren

Changemaker \$100,000+

Ahmanson Foundation
Ballmer Group
Beth and Michael Hunkapiller
California Charter Schools Association (CCSA)
Kenneth Rainin Foundation
LA84 Foundation
The Green Foundation

Patron \$50,000+

Crocker Philanthropic Foundation Fund
Golden State Community Foundation
Joyce Wisner
William Zimmerman Foundation

Friend \$25,000+

Community Engagement Initiative
Franklin and Catherine Johnson Foundation
Irene S. Scully Family Foundation
No Kid Hungry

Achiever \$10,000+

Beth and Brian Grossman
George and Leslie Hume
Jonathan and Kimberly Garfinkel
Megan and Tim Strickland
Mockingbird Foundation
Ross and Marilyn Bewley Charitable Foundation
The Ralph M. Parsons Foundation

Supporter \$5,000+

AAA
Anna and Frank Rolapp
Carmen Jiron
Columbia Bank
Daphne Hackett
East West Bank
Google
GPSN
Kathleen and Richard Hoertkorn
Koshland Foundation
Lorea Martinez and John Rethans
Mei and Herald Chen
Nikki Gingo
Philanthropic Ventures Foundation
Richard and Holly Lawson
Shishir and Anjuli Mehrotra
Silicon Schools Fund
Stephanie and John Warren

Contributor \$1,000+

Agripina Paschall
Alani Melchor
Amy Hoffman
Anna Utgoff and Nick Spicer
Bank of America
Bessie Seybold
Billy Harris and Nicholas Casagrande
Brian and Molly Auld
Cesar Juarez
David Kennedy
Gina and Bill Glaser
Greg Bybee
James B. McClatchy Foundation
Janelle Matthews
Jill and Brian Hetherington
Joanne and Jon Goldstein
Julianne and Scott Wagner
Kathy Grossman
Katie and Matt Garlinghouse
Li Jiang
Lilli Rey

Lucie Weissman
Lynne Ziegenhagen
Mala Batra
Marsh McLennan Agency
Mona and Nihar Shah
New York Life
Norma Metheny
Oakland Promise
Peter Matt
Rajesh Varma
Roberts Foundation
Rosemary and Ben Eiref
Roya Shad
Snap Mobile, Inc.
Susan and Kevin Denny
Tah Dah Foundation
The Baldwin Group
University of Oregon
Vevina McAllister
West Coast
Young, Minney, & Corr LLP

Partner \$500+

Adrina Pulley
Allison and Jamie Keenan
Beth Ann Steinberg
Brenda Briceno
Dana McCabe
Gethen Jacobs
Harvey and Rhona Weinstein
Julie Veit
Kate and Travis Parsons
Kate Conte
Katie Hawinkels
Kaye Slavet
Kelli Walker
Kona Ice of Downey/Montebello
Lindsay and Alex Ramsay
Lisa Genova
Liza Edelman
Mandeep Dhesi
Marci Palatella
Mark and Ashley Robinson
Nicholas Frame
Pam Fritz
Rachel and John Rosenberg
Raphael and Felicia Lerner
Sue Shalvey
Veronica and Peter Krivkovich
Vinit Sukhija
Wendell Winton
Zara Fritts

A special thank you to the Chamberlin Education Foundation for contributing in other significant ways





Your support makes all the difference.

Together, we can unlock the full potential of every scholar.
Thank you for being a part of this journey!

www.aspirepublicschools.org