



# Stepping Into Tomorrow

ASPIRE PUBLIC SCHOOLS  
Gratitude Report  
2024 - 2025

36 schools / 15,500 scholars





# Our Leadership



Dear Aspire Partner,

As we turn the page on the 2024–2025 school year, we invite you to turn the pages of your “composition book” to learn about the significant milestones accomplished at Aspire this year. We remain steadfast in our commitment to preparing our more than 15,500 scholars for success in college, career, and life. From expanding access to multiple post-secondary pathways to deepening our co-teaching practices to implementing new math curriculum, we are proud of the strides we’ve made.

We also know that continuing to amplify our impact requires confronting our challenges as well. We view it as essential to take a thoughtful assessment of our progress—just as we do with our scholars. The numbers, stories, and experiences shared in this report serve as indicators of where we are today and where we aspire to be. This work is only possible because of our dedicated team, partners, and supporters like you.

Organizationally, we are also making an important shift to operate more flexibly as regions—Aspire Bay Area, Aspire Central Valley, and Aspire Los Angeles—while ensuring our shared Aspire mission, vision, and values serve as our collective foundation. By empowering local leaders and expanding local resources, we uphold a long-standing Aspire value of making decisions closer to our scholars and being responsive to the highest impact opportunities of our communities.

As part of this evolution, I will be transitioning out of the CEO role at the end of this school year. In the year ahead, I will continue to support Aspire in an advisory role, ensuring a smooth transition. It has been the greatest honor of my career to lead this organization. I am filled with pride and optimism about where Aspire is headed and with gratitude for your support of our mission.

That future will be shaped by the thoughtful leadership of our four Executive Directors: Bess Kennedy (Aspire Home Office & Aspire Foundation), Javier Cabra Walteros (Aspire Bay Area), Tony Solina (Aspire Central Valley), and Dr. Chris Carr (Aspire Los Angeles). I have the utmost confidence in their visions and their collective commitment to Aspire’s values. I know they will lead Aspire with the same belief in our scholars that has always guided our work.



Thank you for being a part of this journey. Together, we will continue to evolve, innovate, and in the words of our dear founder Don Shalvey, “dent the universe,” one scholar at a time.

With gratitude,

**Mala Batra**  
CEO, Aspire Public Schools

## Meet Aspire’s Executive Directors



**Bess Kennedy**  
Executive Director,  
Aspire Home Office and  
Aspire Foundation



**Javier Cabra Walteros**  
Executive Director,  
Aspire Bay Area



**Tony Solina**  
Executive Director,  
Aspire Central Valley



**Dr. Chris Carr**  
Executive Director,  
Aspire Los Angeles

## Table of Contents

Our Leadership	2-3
Our Commitments	4-5
Bienestar (Well-being)	6-7
Culture of Belonging	8-9
Community Partnership	10-11
Agency + Self-determination	12-13
Joy	14-15
Our Appreciation	16-19



# Our Vision

Aspire scholars are prepared and empowered to build a fulfilling and liberated future for themselves and their communities.

## Our Mission



Provide a rigorous, joyful academic experience that cultivates our scholars' skills, talents, and gifts, such that they may pursue and persist in college or any post-secondary pathway that is authentic to their identities.



Promote inclusivity and disrupt systems that have historically oppressed marginalized communities, including Black, Latino/a/x, Indigenous, and People of Color.



Nurture our scholars' pride in their abilities, identities, and communities.

## Our Core Values & Commitment to Equity



Bienestar  
(Well-being)



Culture of  
Belonging



Community  
Partnership



Agency + Self-  
determination



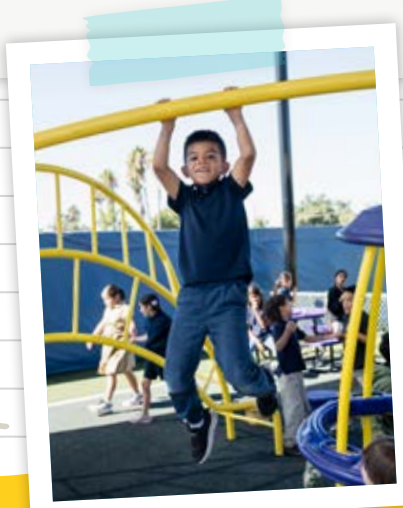
Joy

Our communities (predominantly Black and Latinx) persist in a system that fails to adequately educate all students. Aspire was founded to address these long-standing inequities and transform the disproportionate outcomes they cause. We believe these core values can guide us toward greater racial, social, and gender equity across our communities.

## At Aspire, we...

- ✓ **Understand the significant difference between equity and equality.** Every student deserves to receive what they need to succeed (equity), not that every student receives the same amount of resources, instruction, attention, etc. (equality).
- ✓ **Develop school environments** where all students are actively and meaningfully engaged in rigorous instruction.
- ✓ **Interrupt the "school to prison pipeline"** – policies and practices that are directly and indirectly pushing the most at risk students out of school and on a pathway to the juvenile and criminal justice systems.
- ✓ **Engage families as partners** in meaningful ways in our work.
- ✓ **Build the capacity of diverse teams** that are more reflective of our students.
- ✓ **Nurture an open, collaborative, and trusting environment** because the work is enormous, deeply personal, emotional and often difficult.

**We must continually put the Equity Commitments into action and live by them.** Every Aspire teammate is accountable for applying these commitments in every decision, use of resources, and management of talent. The power of our collective and individual dedication to these commitments is reason enough to be hopeful as we pursue our mission and create a more just and equitable world.







# Bienestar (Well-being)

Learning, working, and playing require us to feel safe and well. Our spaces and interactions support physical, emotional, cultural, ethnic, academic, and social safety, allowing us to feel secure enough to bring our full selves each day.

## Strengths & Celebrations

### Bay Area

- Increased support for nearly **100 housing-insecure and foster youth**
- **Created Special Populations role** to support scholars with disabilities, multilingual learners, homeless scholars, and scholars in foster care

### Los Angeles

- Piloted a **Black Teammate Mentorship program** supporting **20 teammates** to increase connection and retention
- **Redesigned a health education program** to focus more holistically on student wellness and provide personal hygiene kits



**90%** of teammates feel a sense of belonging at Aspire

**92%** of Aspire families feel welcomed at schools

### Central Valley

- **Aspire Summit Charter Academy and Aspire Alexander Twilight College Preparatory Academy** partnered with Kaboom!, CarMax, and Smile Generation to install **new playgrounds**



### Across Aspire

- Implemented a pipeline for Aspire hourly teammates to become teachers through **professional development, tuition support from Rivet School, and with funding support from the Warriors Community Foundation**
- Supplied **whole-school wellness to 10 schools and regional teams** to reduce teacher burnout through the Teaching Well
- Incorporated **flexible seating in classrooms** to better support neurodiverse scholars
- Provided **"Know Your Rights" trainings** and resources related to immigrant rights



### Areas for Growth & Continued Focus

- **Reducing chronic absenteeism** and working towards pre-pandemic levels of 10%; while **rates have improved from 39% three years ago to 23% this year**, continued efforts are needed to ensure all students attend school consistently for their academic success and well-being
- **Improving school facilities** as many buildings lack **green playground space** and require **renovations**
- **Strengthening efforts on retaining and supporting Black teammates, scholars, and families**







# Culture of Belonging

We seek to be known and seen at Aspire, where we can be our authentic selves and be comfortable sharing all aspects of our identities. We respect and celebrate each other's differences, and approach one another with empathy and understanding—no matter one's background or cultural history. Each person is valued and has a place in this community.

## Strengths & Celebrations

### Bay Area

- Implemented monthly **Communities of Practice** for Pro-Black Coordinators and Special Education teams



### Los Angeles

- Supported teacher growth and mentorship** focused on student outcomes through TeachBoost
- Consistent region-wide approach to **confronting racial harm** with restorative practices



### Central Valley

- Increased attendance rates** by 4% with funding support from the Stronger Connections grant

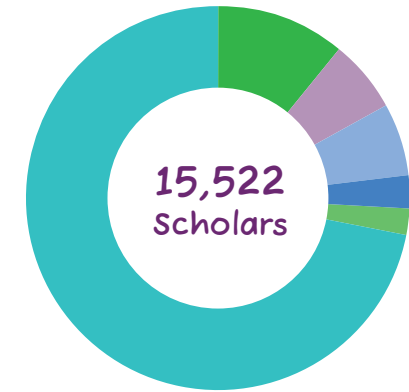


### Areas for Growth & Continued Focus

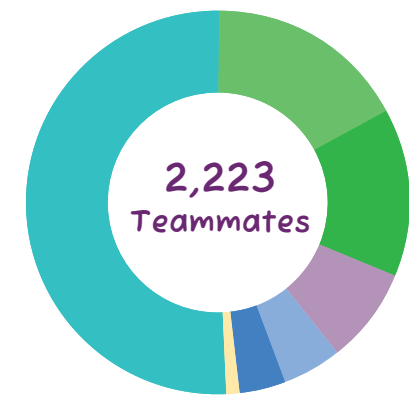
- Enhancing **recruitment and support** for special education teachers
- Exploring ways to **increase teacher retention and sustainability**; our teacher retention rate of 81% is on par with California's overall rate, but we know we can do better for our scholars



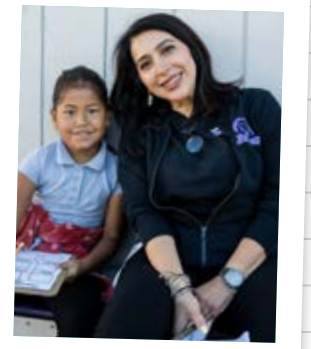
## Our Teammates & Scholars



- Latinx 72%
- Black or African American 11%
- Asian 6%
- Other 6%
- Multi-racial 3%
- White 2%



- Latinx 51%
- White 17%
- Black or African American 14%
- Asian 8%
- Other 5%
- Multi-racial 4%
- Native Hawaiian or Other Pacific Islander 1%



## Serving All Scholars

**14%** Receive Special Education services

**76%** Qualify for free or reduced cost lunch

**52%** Speak a language other than English at home





# Community Partnership

We are all connected and collectively responsible for the well-being of every member of our extended community. When one of us is let down, we are all let down. When one of us succeeds, we all succeed. Only in partnership and by listening deeply to one another can we create collective movement.

## Bay Area

- Created Diversity in Leadership initiative to support teammate development and growth

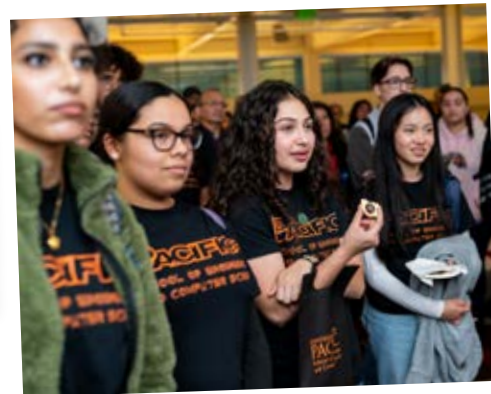
## Central Valley

- Enduring partnerships with the University of the Pacific, Delta College, Modesto Junior College, and American River College allowed high school students to take college courses



## Los Angeles

- Unified commitment to supporting school culture through Positive Behavioral Interventions and Supports with funding from the Community Schools Grant
- Increased dual enrollment opportunities for high school students to explore post-secondary pathways



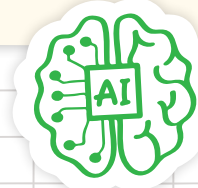
## Areas for Growth & Continued Focus

- Increasing partnerships that provide scholars with more internships and real-world learning experiences

## Across Aspire

- Increased partnerships with community organizations through Community Schools Grants secured at 28 schools
- Advocated for a shift in the current funding formula from attendance to enrollment through our "Count Me In" campaign with a goal of allocating resources based on the number of students a school is responsible for serving
- Increased voter registration in our communities by 6% and supported more than 500 scholars voting in local school board elections through the "Get Out the Vote" campaign
- Explored how AI can advance equity in education by building awareness, developing policies, and offered training through partnership with the Alliance of AI for Equity

**COUNT ME IN**  
FAIR FUNDING. SUPPORTED STUDENTS.







## Agency + Self-determination

Each person has unique dreams. At Aspire, we set a foundation for our scholars to gain knowledge, skills, and power to access and make choices for their families and post-secondary lives.

### Strengths & Celebrations

#### Bay Area

- Held first Aspire School Board Candidate Forum in Oakland to allow Aspire families to hear directly from candidates



#### Los Angeles

- Provided professional development to ensure full inclusion of all students with disabilities into general education classrooms
- Amplified scholar voices through Student Representatives on the Huntington Park City Hall Student Education Commission

#### Across Aspire

- Awarded \$100,000 in post-secondary scholarships to deserving seniors



#### Central Valley

- Reinvigorated student-led conferences and individual learning plans where all students are setting goals and monitoring their progress
- Expanded career pathways and experiential learning through San Joaquin A+ to offer employer industry tours and summer internship opportunities

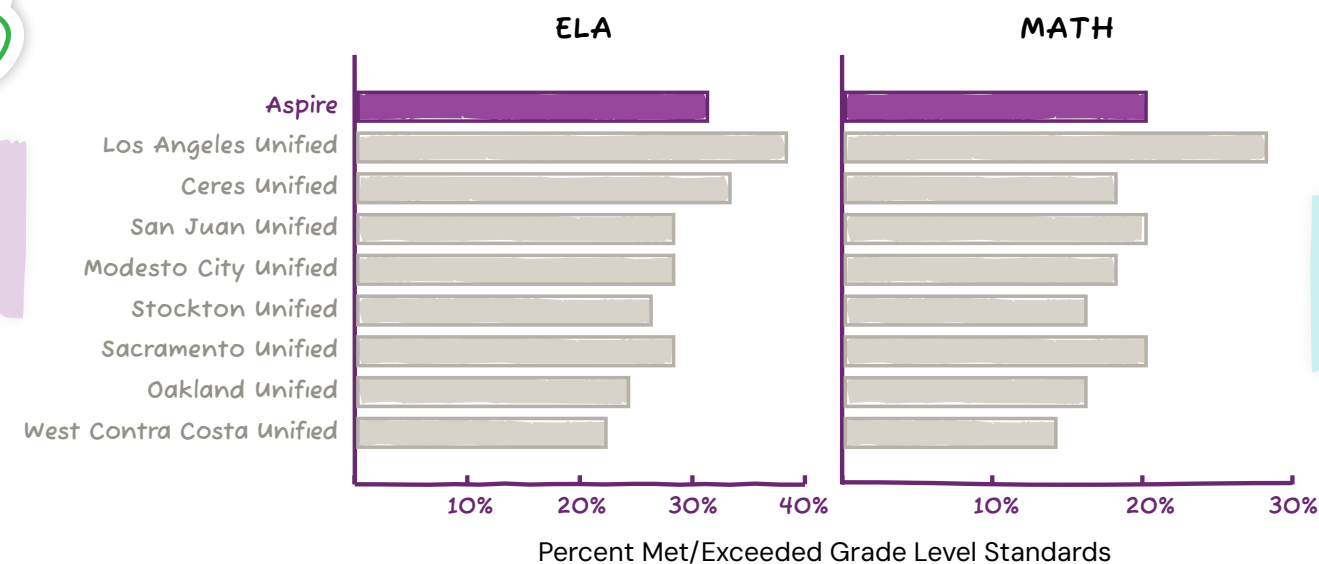
#### Areas for Growth & Continued Focus

- Increase opportunities for mentorship, internships, and career-focused field trips
- Expanding resources to extend special education best practices across all schools



## Academic Achievement

### Aspire Proficiency Rates Compared to Similar School Districts



★ Aspire scholars outperform nearly all school districts with similar demographics







# Joy

We strive to make Aspire and our communities a joyful place to learn, work, and be, together. Our work to shift outcomes is hard, yet we persist and have gratitude and pride in the journey. Joy makes it all possible!

## Strengths & Celebrations

### Bay Area

- More than 300 Aspire scholars and families came together for basketball and cheerleading tournaments and carnival games at the first annual Spring Jamboree



### Los Angeles

- Increased cultural celebrations including mariachi performances, Native American bird singers, and LGBTQIA presentations



### Across Aspire

- 21 schools celebrated National Ruby Bridges Walk to School Day, honoring the bravery and legacy of civil rights icon Ruby Bridges



### Central Valley

- Vision 2030 Summit brought teammates from all schools to have a shared sense of vision and direction

### Areas for Growth & Continued Focus

- Increasing experiential learning opportunities for every scholar to enrich and complement their curriculum
- Securing funding to strengthen positive behavior intervention supports

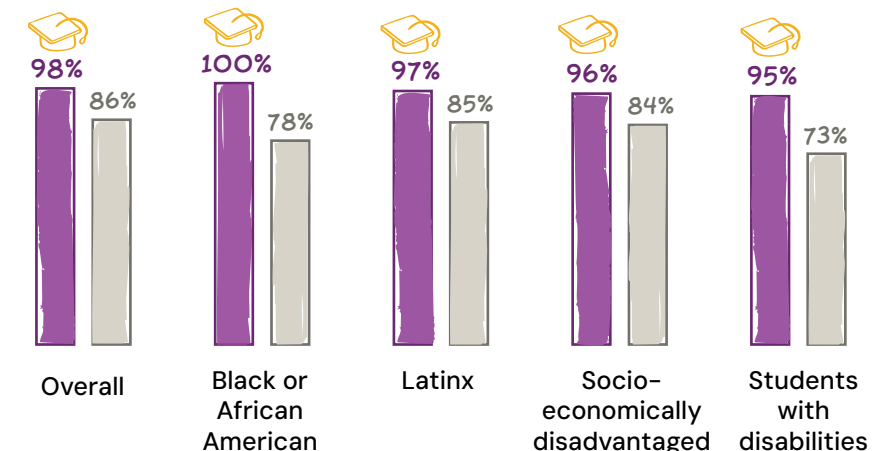


## Aspire Class of 2024 Celebrates:

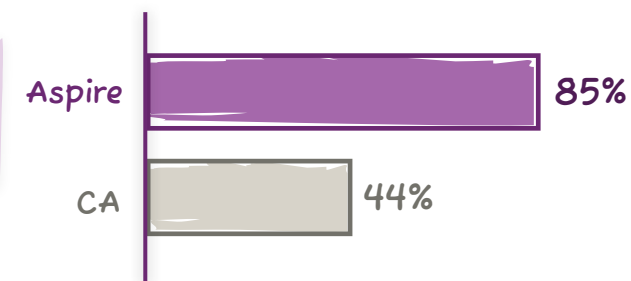
- 713 Graduates
- 98% Graduation Rate
- 11 Seniors earned AA degrees



### Our Graduation Rates 2024 Aspire vs. CA Graduation Rates



### Our A-G Rates



To attend a UC or CSU, students are required to take 15 courses in seven areas: history, English, math, science, foreign language, arts, and an elective. Each category has its own letter, A-G, which is where the requirements get their name. These courses overlap with high school requirements, but they are also more rigorous.



## Our Appreciation

We are deeply grateful for the philanthropic partners who have supported us in the 2024-25 school year.

In 2024-2025, the Aspire Public Schools Foundation secured over **\$16 million in competitive grants and philanthropic support** to fund 10 initiatives supporting scholars and schools.



### Aspire Public Schools Board of Directors

Beth Hunkapiller, Board Chair  
 Carol J. Ornelas  
 Ay'Anna Moody  
 Lorea Martínez  
 Christina Christopher  
 Veleta Savannah

### Aspire Public Schools Foundation Board of Directors

Liat Cherkes, Board Chair  
 Allison Aliaga  
 Greg Bybee  
 Beth Grossman  
 Beth Hunkapiller  
 Dana Nagengast  
 Oliver Enrique Rodriguez  
 Jesa Townsend





# Thank You to Our Donors



## Changemaker \$250,000+

Ballmer Group  
Charter School Growth Fund  
Kenneth Rainin Foundation  
San Joaquin A+

## Patron \$100,000+

Anupam and Kavita Mishra  
Beth and Michael Hunkapiller  
Community Engagement Initiative  
Silicon Schools Fund

## Friend \$50,000+

Betsy Ellis Chung and Peter Chung  
Joseph Drown Foundation  
Warriors Community Foundation  
William Zimmerman Foundation

## Achiever \$25,000+

Anonymous  
Beth and Brian Grossman  
Irene S. Scully Family Foundation  
Quest Foundation  
The S.P. Toku Foundation

## Supporter \$10,000+

California State University  
Charles and Karen Couric  
Elise and Sayed Darwish  
George and Leslie Hume  
Jonathan and Kimberly Garfinkel  
Linda and Richard Leao  
Louise Muhlfeld Patterson and Arthur Patterson  
Merrill Family Foundation  
Mike and Cathy Podell  
Nancy and Jason Rosenthal  
Steven Russell and Nancy Wagstaff  
The Ralph M. Parsons Foundation  
Roberts Foundation  
Warburg Pincus

## Contributor \$5,000+

AAA  
Amy and John Underwood  
Antone and Marie Raymus Foundation  
Carmen Jiron  
Dauber Foundation  
Lilli Rey  
Lorea Martinez and John Rethans  
Philanthropic Ventures Foundation  
Phyllis and Fritz Grupe  
Richard and Holly Lawson  
Supna Patel  
The CarMax Foundation

## Partner \$1,000+

Agripina Cuellar  
Mr. and Mrs. Alex Wolf  
Andrea Gouw  
Anna and Frank Rolapp  
Anna Utgoff and Nick Spicer  
The Baldwin Group  
Bessie Seybold  
Beth and Mark Hanson  
Bibiana Cardoso  
Billy Harris and Nicholas Casagrande  
Bradley and Todd Kovacevich  
Breigh and Andy McCall  
Brian and Molly Auld  
Capital Group Companies  
Carin Fradin  
Cesar Juarez  
Cinthia Simon  
Danielle Simon  
DeGuzman Family  
Donald and Linda Wiley  
Eileen Freiburger  
Harvey and Rhona Weinstein  
Heather and Paul Haaga  
Helping Hands  
Holly Maddox  
Joanne Goldstein  
John Dawson  
John Maddox  
Karen Crawford  
Kathleen and Richard Hoertkorn  
Laura and Jeff Blankstein  
Liat Cherkes  
Louise Bryson  
Lynzi Ziegenhagen  
Marsh McLennan  
Megan Strickland  
Molly Wood and Dagny Maidman  
Mona and Nihir Shah  
Monica Rodriguez  
New York Life  
Paritosh and Nisha Somani  
Peter Denny Thunell  
Ricoh USA, Inc.  
San Jose Sharks  
Stephanie Warren  
Stifel  
Umpqua Bank  
Uvas Foundation  
Wood Rodgers  
Young, Minney and Corr, LLP

## Donor \$500+

Atkinson, Andelson, Loya, Ruud and Romo  
Blythe Haaga  
Brooke Kuhn  
Carol Ornelas  
Chelsea Woo and Bobby Thompson  
Dana McCabe  
Diego Cabrera  
Edith Hernandez-Cabrera  
Eli Shapiro  
Elizabeth Torres  
Emily and Bryce Chastain  
Evelyn Ugaz  
Gina Glaser  
Greg Bybee  
Gregory Cordon  
Jeffrey Crosby  
Jill and Brian Hetherington  
JoAnn Howard  
Jorge Parra  
Joy Leighton  
Lija McBride  
Logan Campbell  
Manpreet Singh  
Maria Tijerin  
Nicholas Frame  
Peter Gibson  
Rachel and John Rosenberg  
Rajesh Varma  
Raphael Akinsipe  
Ruth Bryson  
Silvia Ponce  
Simpalipreet Kaur  
Sue Shalvey  
Victoria Evans







## Join us as we Step Into Tomorrow!

We appreciate your partnership for the opportunities to **empower students**, **uplift communities**, and **drive meaningful change**. Our Annual Gratitude Report highlights the **incredible impact of your support—and the work still ahead**.

This year, we have the chance to:

- ★ Expand access to high-quality education for ALL scholars
- ★ Enhance innovative learning experiences and multiple post-secondary pathways
- ★ Strengthen support for our teammates

Your support makes all the difference. Together, we can unlock the full potential of every scholar. **Thank you for being a part of this journey!**

Support Aspire Now



Bay Area  
East Palo Alto  
Oakland  
Richmond

9 Schools

Central Valley  
Sacramento  
Stockton  
Modesto

16 Schools

Los Angeles  
Huntington Park  
Los Angeles  
South Gate

11 Schools

